

Push-in flow sensors // VTH25



Highlights

- Low deviation in mass production, fixed pulse rate, low start-up
- High measuring accuracy, compact dimensions
- Proven in numerous mass production applications

Technical data

| 1 Push in turbine | |
|---------------------------|--|
| Flow range | 4...160 l/min* |
| Accuracy | ±5 % of range (up to 5 l/min ±7 % of reading) |
| Repeatability | ±0.5 % |
| Signal output | From 1 l/min |
| Medium temperature | Max. 85 °C |
| Nominal diameter | DN 25 |

Approvals
Plastic parts and O-Ring comply with KTW-guidance or. the Elastomer Guideline of the German Federal Environmental Agency

Stated values may vary depending on geometry of fittings.

* not suitable for continuous operation

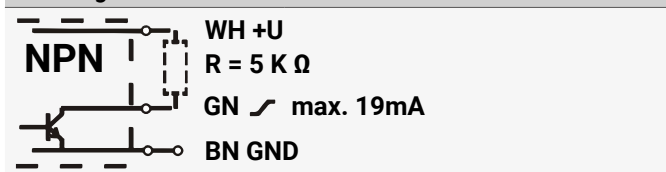
** Union nut included

*** O-ring included

Technical data

| 2 Hall effect sensor** | |
|------------------------------|-------------------------------|
| Nominal pulse rate | 65 Pulses/l |
| Frequency output | NPN open collector |
| Power supply | 4.5...26.5 VDC or 10...30 VDC |
| Electrical connection | 2 m PVC-cable |

Pin assignment



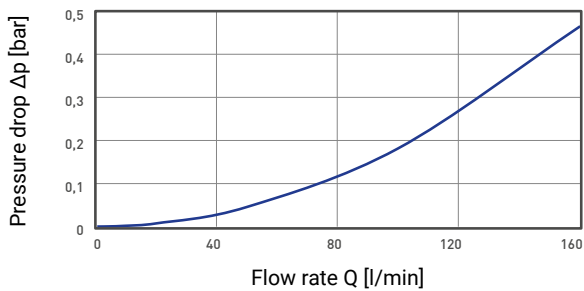
Technical data

| 3 Adapter sleeve for hall effect sensor*** | |
|--|-------------------|
| Pressure rating | PN 10 |
| Process connection | G $\frac{3}{8}$ A |

Approvals
Plastic parts and O-Ring comply with KTW-guidance or. the Elastomer Guideline of the German Federal Environmental Agency

Typical pressure drop // Technical drawing // Materials

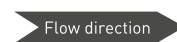
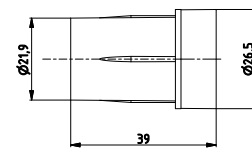
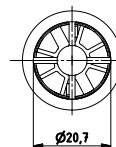
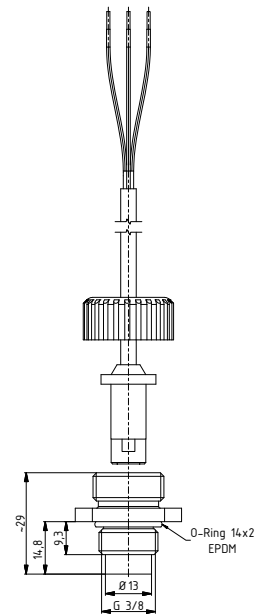
Typical pressure drop



* determined in SIKA pipe tee

VTH20

| Materials in contact with fluid | |
|--|--|
| Push in turbine | |
| Turbine body | PS-ST Xarec® 20 % glass fibre reinforced |
| Rotor | PS-ST Xarec® 20 % glass fibre reinforced |
| Shaft | Stainless steel 1.4539 |
| Axial bearing | Sapphire |
| Radial bearing | PA |
| Adapter sleeve for Hall effect sensor | |
| Adapter sleeve | PS-ST Xarec® 20 % glass fibre reinforced |
| O-ring | EPDM |



Article numbers

| Order code | |
|--|----------------|
| Component | Order number |
| Push in turbine | VT2042020000YY |
| Hall effect sensor | |
| → 4.5...26.5 VDC | VT2231 |
| → 10...30 VDC | VT2228 |
| Adapter sleeve for Hall effect sensor | XVT1205 |