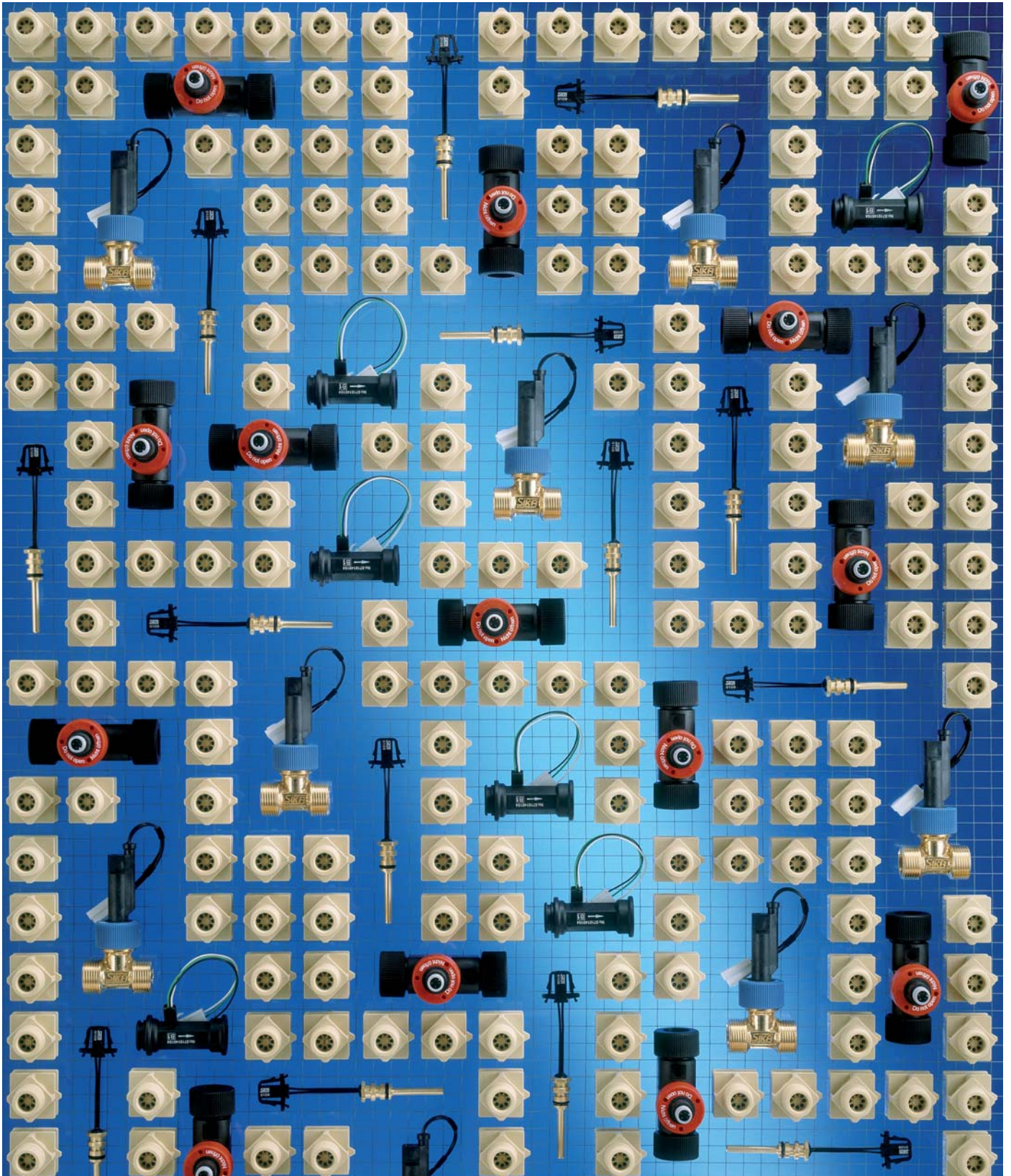




# Product Overview OEM-Sensors

## Flow Switches and Flow Sensors



## Sensors and system components for original equipment (OEM)

# Reliable - safe - tried and tested!

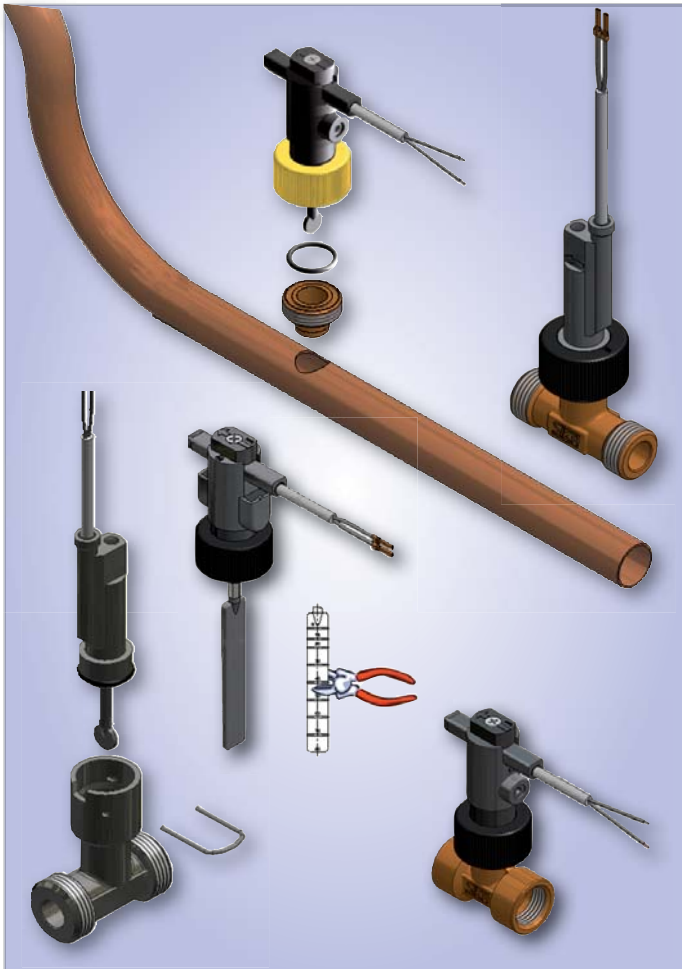
### Professional collaboration is our aim



We provide technically competent advice from our knowledge of the applications and collaboration in the development phase. Flexible adaptation of existing standards, designed to meet the needs of our customers and their applications as well as close cooperation in the areas of quality assurance and product improvement, ensures optimal results. Various sensors or functions can be combined.

Utilize SIKA flow switches for your OEM application to ensure minimum flows or to start a technical process. With SIKA turbine flow sensors you get precise and robust products to measure flow rates or total flows, for water and water mixtures.

### SIKA Flow Switches



- Proven paddle construction in compact design, specially for OEM applications
- Switch point remains stable over long periods, paddle retraction by magnet, no spring fatigue
- Inline types with pipe sections (DN 8...DN 50) or insertion into pipes (up to DN 250)
- Insertion installation in copper pipes by means of cost saving soldered adapter
- Paddle can be trimmed to adapt to different pipe sizes
- Seal with integrated O-ring, no fibrous or fluid sealants required
- Reed contact as signal
- Design for potable water or heating water (pollution resistant)
- Frost-resistant versions
- Push-in flow switches save on installation costs
- Glass-fibre reinforced plastic with low water absorption
- Customer-specific plug connectors
- Maximum temperature of medium 100 °C
- Pressure rating PN10

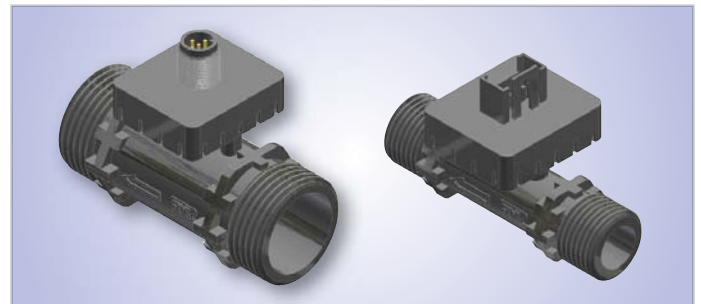
**Request detailed catalogues now!**

+49 56 05 / 8 03-0  
marketing@sika.net  
[www.sika.net](http://www.sika.net)

## SIKA Flow Sensors

### Vortex Flow Sensors

- Solid state flow sensor with no moving parts for liquids
- Rugged glass fibre reinforced plastic ensures highest strength and performance
- Wide measuring span
- Max. medium temperature up to 90 °C
- Temperature sensor integrated



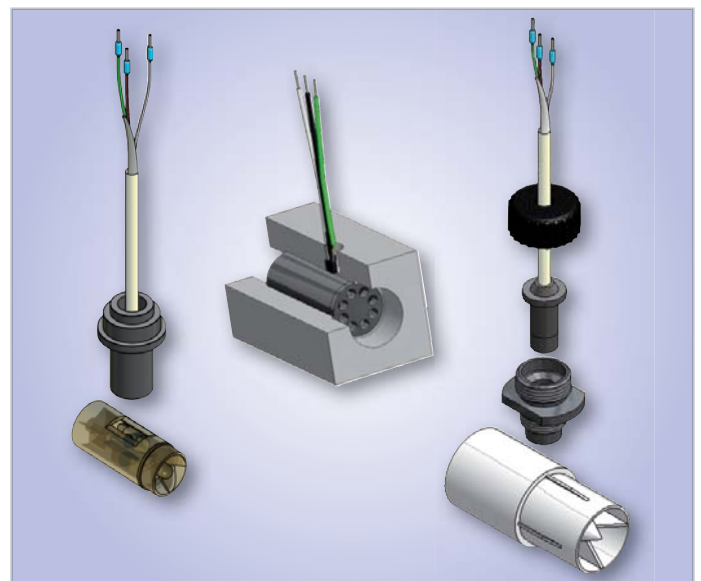
### Inline Turbine Flow Sensors

- Specially developed for large series applications (OEM)
- Turbine body made of plastic or brass,
- Long life as a result of high grade sapphire bearings
- Suitable for use in potable water
- Negligible dispersion of output signal
- Glass-fibre reinforced plastic with low water absorption
- Customer-specific plug connectors
- Wide turn down ratio
- Maximum temperature of medium 150 °C, specially for solar applications



### Built-in Turbine Flow Sensors

- Easy to integrate into armatures and manifolds
- Frequency of output signal proportional to flow rate
- Resistant to pressure peaks
- Signal transmission even with small flow rates
- Materials suitable for potable water
- Long-durability due to high grade sapphire bearing
- Glass-fibre reinforced plastic with low water absorption
- Sizes DN 10, DN 15, DN 20 and DN 25 available
- Maximum temperature of medium up to 85 °C
- Pressure rating PN 10



## Approvals

The following approvals are available as options for various series and types:

# Our Production and Sales Range



Flow Sensors without moving Parts



Turbine Flow Sensors



Flow Switches



Pressure Gauges and Pressure Sensors



Industrial Thermometers



Electronic Digital Thermometers, Dial Thermometers



Measuring Instruments



Temperature Sensors



Calibrators, DKD-Laboratory

## Your competent partner for measurement and control

**SIKA**<sup>®</sup>  
founded 1901  
Dr. Siebert & Kühn GmbH & Co. KG

...measurement...control...calibration

Phone: 0700 CALL SIKA

Phone: +49 5605 803-0

Fax: +49 5605 803-54

E-Mail: info@sika.net

Internet: http://www.sika.net

Struthweg 7-9, 34260 Kaufungen

P. O. Box 11 13, 34254 Kaufungen

Germany

Subject to technical modification

